

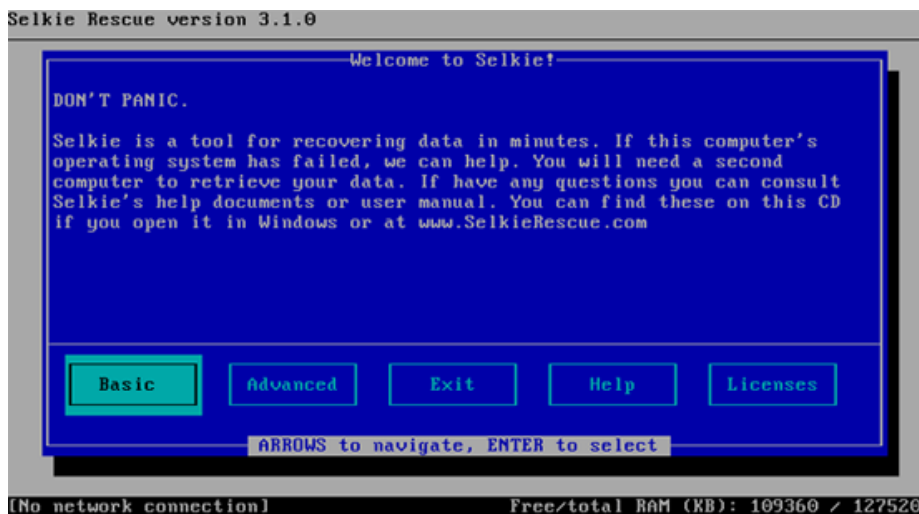
These are the basic steps you will take to recover your data using Selkie Rescue Data Recovery (and some of the screens you will see during the process):

Step 1

After you have downloaded the program to your working computer, you will need to burn a rescue CD. You will place the rescue CD into your broken computer and reboot it. You will see a screen that looks like this:



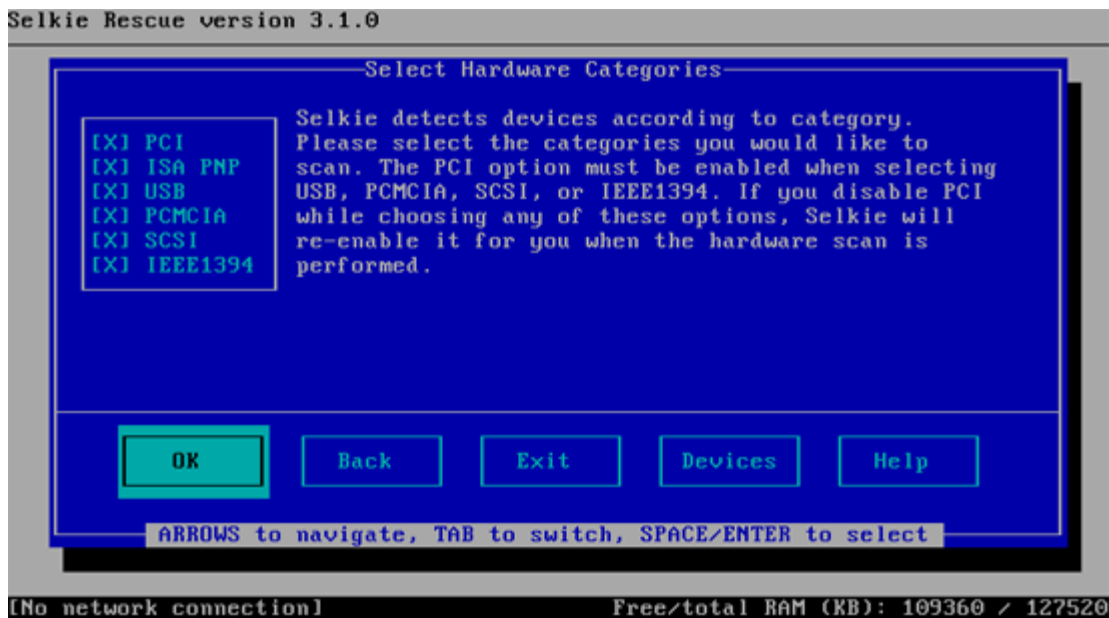
Selkie Rescue will begin with the welcome screen:



If you are using a crossover cable to connect your computers, you must choose advanced mode. If your computers are connected via a wired network, choose basic mode. In both cases press ENTER to create the network and move to the next screen.

Step 2

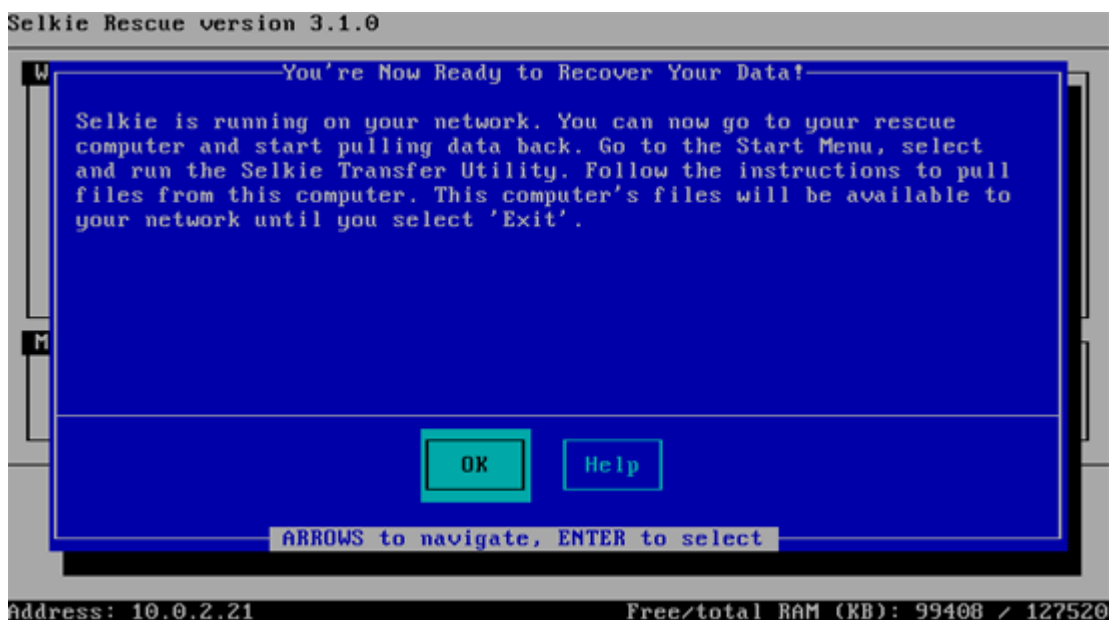
Once Selkie has established the network between the two computers, she will search for hardware on the broken computer. In most cases, you can just press ENTER and Selkie will search through all the hardware associated with your computer.



If you would like to select specific hardware for Selkie to search and you need assistance, consult the online manual.

Step 3

By communicating via the network you have set up, Selkie will find a workgroup on the working computer to transfer your files into. Press ENTER once again and you will see this screen:



Congratulations! You are ready to recover your files! Using Selkie Rescue Data Recovery is easy as 1-2-3!

You can now move to your working computer and open the Selkie Rescue Center. Select the files that you want to transfer, and where you want to transfer them to.